

● Paarl, Hoog En Droog

**GREEFF**



CHRISTIE'S  
INTERNATIONAL REAL ESTATE



**R12,000,000**



*The kind of home you steal ideas from, and when only have time to view the best!*

This Architect understand women, that's why he built this splendor masterpiece! Captivated with breathtaking views, located in the desirable L'Ideal Estate and on the doorstep of well known schools. Tasteful decorating invites you to move in - modern, contemporary, elegance and comfort! Escape to tranquility throughout this family home! Six luxurious bedrooms, each offering space and style. The lavish bathrooms sparkles and is a conversation piece on it's own. Imagine the freedom of open-plan living areas, perfectly designed for entertaining or relaxing with loved ones. Dual built-in braai areas, lovely swimming pool, a balcony adjoining the main bedroom with panoramic views will leave you breathless! A private study will offer you a quiet haven for work



Web Ref RL22139  
<https://www.greeff.co.za>

## Features

Interior	Exterior	Sizes
Bedrooms	6	Floor Size
Bathrooms	5	Land Size
Recep. Rooms	4	
Dining Rooms	1	
	Carports/Parkings	4
	Pool	Yes
		584m <sup>2</sup>
		665m <sup>2</sup>



Marianne Viljoen  
 082 681 3053  
[mariannev@greeff.co.za](mailto:mariannev@greeff.co.za)



Annelize Smit  
 082 495 2514  
[annelize@greeff.co.za](mailto:annelize@greeff.co.za)

Greeff Paarl & Winelands  
 158 Main Road,, Cape Winelands District  
 Municipality,, Western Cape,, South Africa  
 (021) 8713040 | [paarl@greeff.co.za](mailto:paarl@greeff.co.za)

**GREEFF**

CHRISTIE'S  
 INTERNATIONAL REAL ESTATE

*Where it counts*

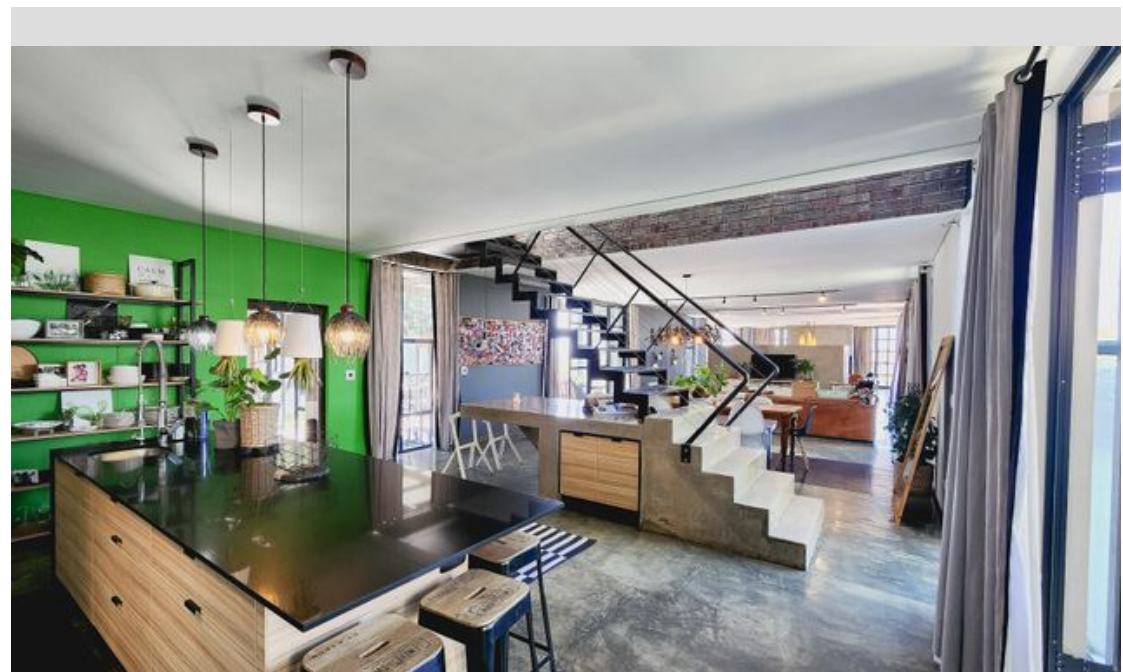
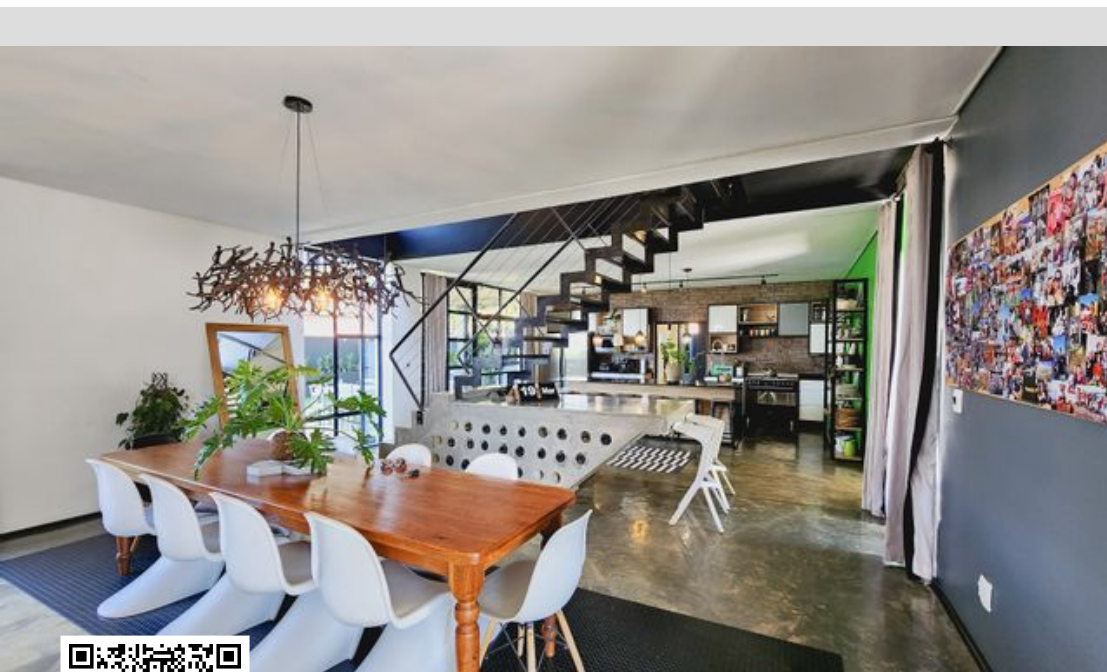
Exclusive Affiliates of Christie's International Real Estate. E & OE



● Paarl, Hoog En Droog

**GREEFF**

CHRISTIE'S  
INTERNATIONAL REAL ESTATE



Web Ref RL22139  
<https://www.greeff.co.za>