



● Parow, Parow Valley

**GREEFF**



CHRISTIE'S  
INTERNATIONAL REAL ESTATE



**R2,150,000**



*SPACIOUS, INVITING FAMILY HOME WITH INCOME-GENERATING FLATLET IN PAROV*

Step into the four-bedroomed main house and be greeted by an incredibly spacious open-plan lounge and dining room with French doors that lead to the front garden, allowing ample natural light to fill the space. The modern kitchen features plenty of built-in cupboards, a hob, an oven, and a water point for a dishwasher. A serving hatch adds practicality and convenience. The main bedroom is generously sized and comes complete with plenty of built-in cupboards. The second bedroom has built-in cupboards, providing ample room for personal belongings. Additionally, there are two interleading bedrooms with built-in cupboards and an en suite bathroom featuring a shower, basin, and toilet. One of the bedrooms has a door that leads to the rear of the property,



Web Ref RL20338  
<https://www.greeff.co.za>

**Features**

Interior	Exterior	Sizes	
Bedrooms	4	Carports/Parkings	5
Bathrooms	2	Pool	No
Recep. Rooms	2		
Dining Rooms	1		
		Land Size	595m <sup>2</sup>



Beverly Coetzee  
 081 271 1858  
[beverly@greeff.co.za](mailto:beverly@greeff.co.za)



Patrick Peters  
 076 805 3113  
[patrick.peters@greeff.co.za](mailto:patrick.peters@greeff.co.za)

Head Office  
 262 Main Road, Kenilworth, Cape Town  
 (021) 7634120 | [communications@greeff.co.za](mailto:communications@greeff.co.za)



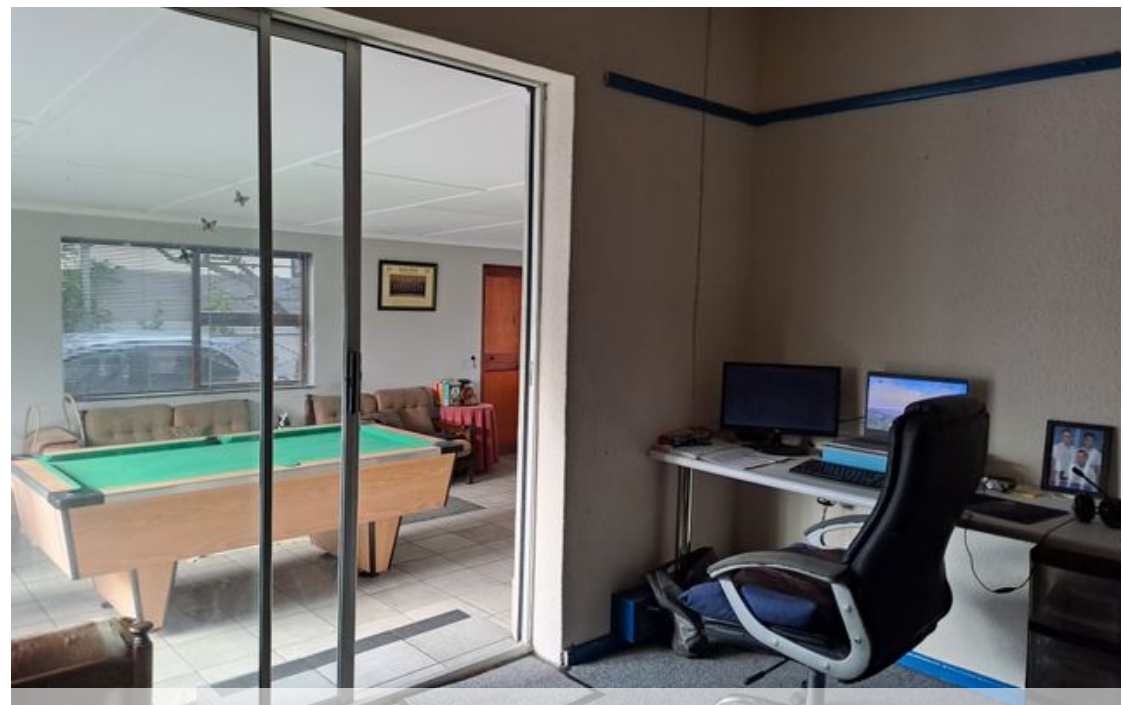
*Where it counts*

Exclusive Affiliates of Christie's International Real Estate. E & OE



● Parow, Parow Valley

**GREEFF**  
CHRISTIE'S  
INTERNATIONAL REAL ESTATE



Web Ref RL20338  
<https://www.greeff.co.za>