



● Somerset West, Mzuri Estate

**GREEFF**



**CHRISTIE'S**  
INTERNATIONAL REAL ESTATE



**R4,999,000**

 3
  2.5
  4

*Brand new designer home*

Buy a plot and plan, newly built home in the sought after Mzuri Estate in the heart of Somerset West. These homes will be state of the art, modern, built with exceptional quality and attention to detail. Grab the opportunity to build your home or investment property at Mzuri. There are 5 design options to choose from: - ranging from 180 sqm - 230 sqm, - 3 or 4 bedrooms - and priced from R4,995,000 up to R6,399,000. All homes have a selection of finishes and design options, please contact us to discuss these. With emphasis on sustainability, these properties feature energy-efficient LED lighting, a solar geyser, and an inverter-ready setup. Mzuri Estate is ideally located near Vergelegen Medi-Clinic, top-rated schools, and Vergelegen Plein Shopping Centre. Enjoy the...



Web Ref RL23868  
<https://www.greeff.co.za>

**Features**

Interior	Exterior	Sizes
Bedrooms 3	Carports/Parkings 4	Floor Size 180m <sup>2</sup>
Bathrooms 2.5	Pool No	Land Size 258m <sup>2</sup>
Recep. Rooms 2		
Dining Rooms 1		



Nori Annandale  
 072 375 7668  
 nora@greeff.co.za



Len Gordon  
 082 497 5873  
 len@greeff.co.za

Helderberg  
 Cnr Main Road & Coronation Road, Somerset West,  
 7130  
 (021) 2058284 | helderberg@greeff.co.za



*Where it counts*

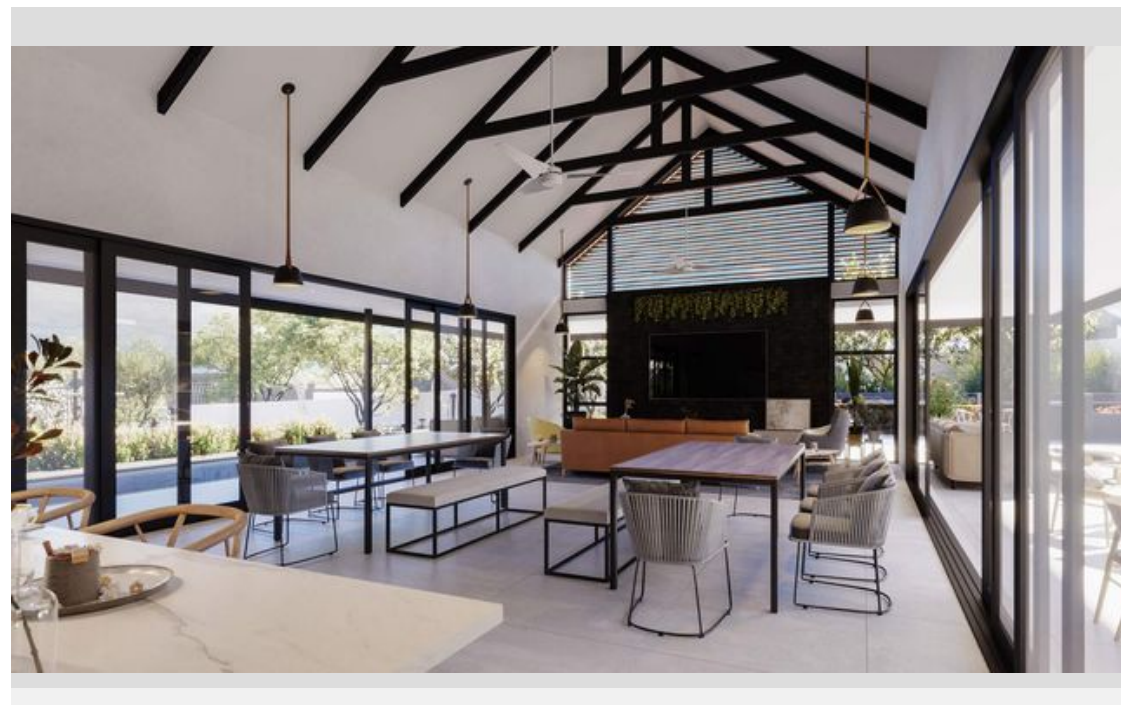
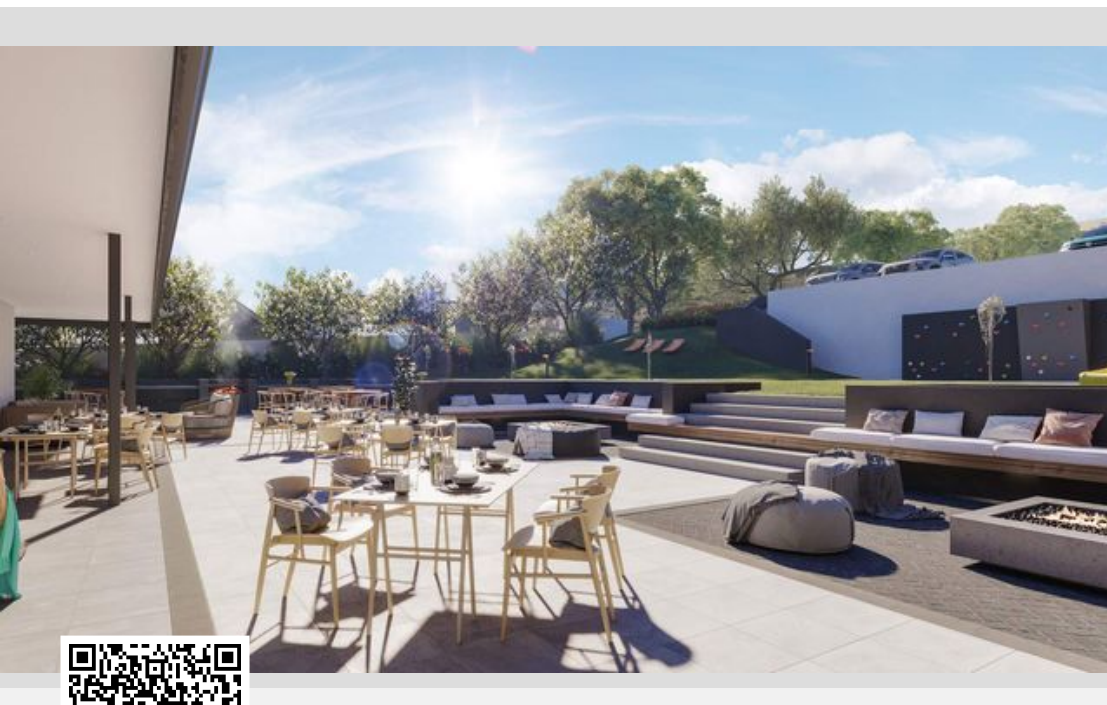
Exclusive Affiliates of Christie's International Real Estate. E & OE



● Somerset West, Mzuri Estate

**GREEFF**

**CHRISTIE'S**  
INTERNATIONAL REAL ESTATE



Web Ref RL23868  
<https://www.greeff.co.za>