



● Somerset West, Paardevlei

GREEFF



CHRISTIE'S
INTERNATIONAL REAL ESTATE



R2,300,000



THIRD FLOOR MODERN OPEN PLAN OFFICE ON ANOTHER LEVEL WITH TWO PARKING BAYS AND VIEWS

Come and view this great investment opportunity in the heart of the Historic Paardevlei Precint. You will immediately feel a pulse once entering this estate. A mix of industries offering a great lifestyle, whether you decide to use this unit as an office or an Airbnb Option. Modern finishes throughout. Currently the unit is being utilised as an open plan office offering a reception desk, fully equipped kitchen, separate bathroom (shower, toilet, basin and heated towel rail). Newly installed ceiling air-conditioning unit. Enjoy a spacious balcony with beautiful mountain views and views over the precinct. Paardevlei offers a unique lifestyle, surrounded by coffee shops and restaurants as well as other industry pockets in the estate. Centrally located to so much on offer...



Web Ref RL20815
<https://www.greeff.co.za>

Features

Interior	Exterior	Sizes	
Bathrooms	1 Carports/Parkings Pool	2 No	Floor Size 64m ²



Loretta Diab
 082 416 6982
loretta@greeff.co.za



Donne Jacobs
 084 448 4446
donne@greeff.co.za

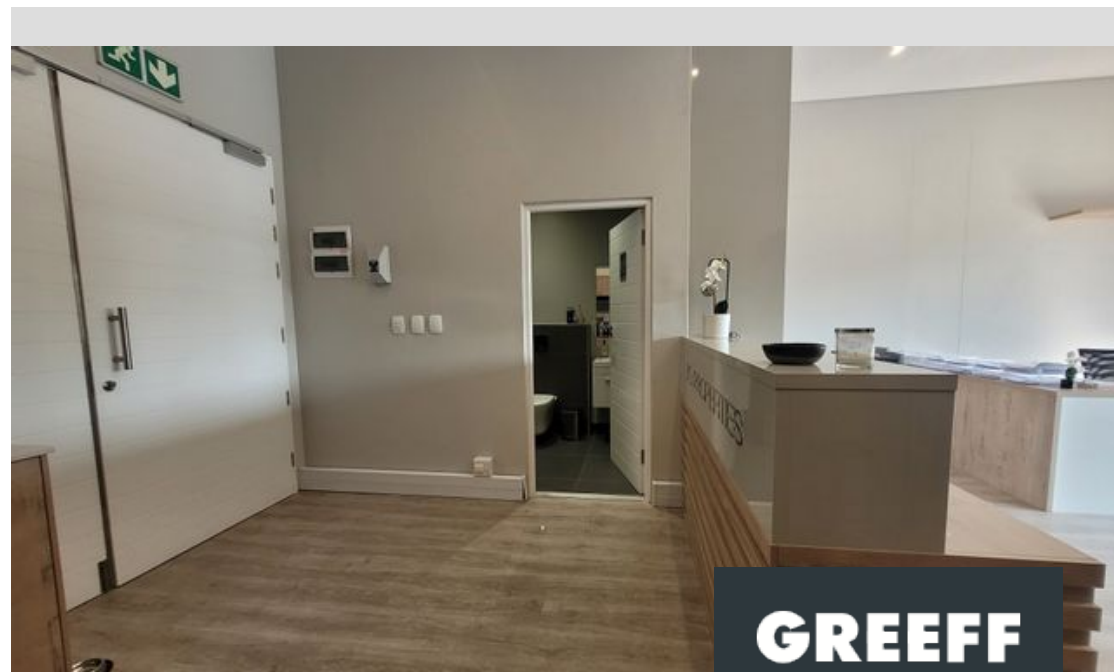
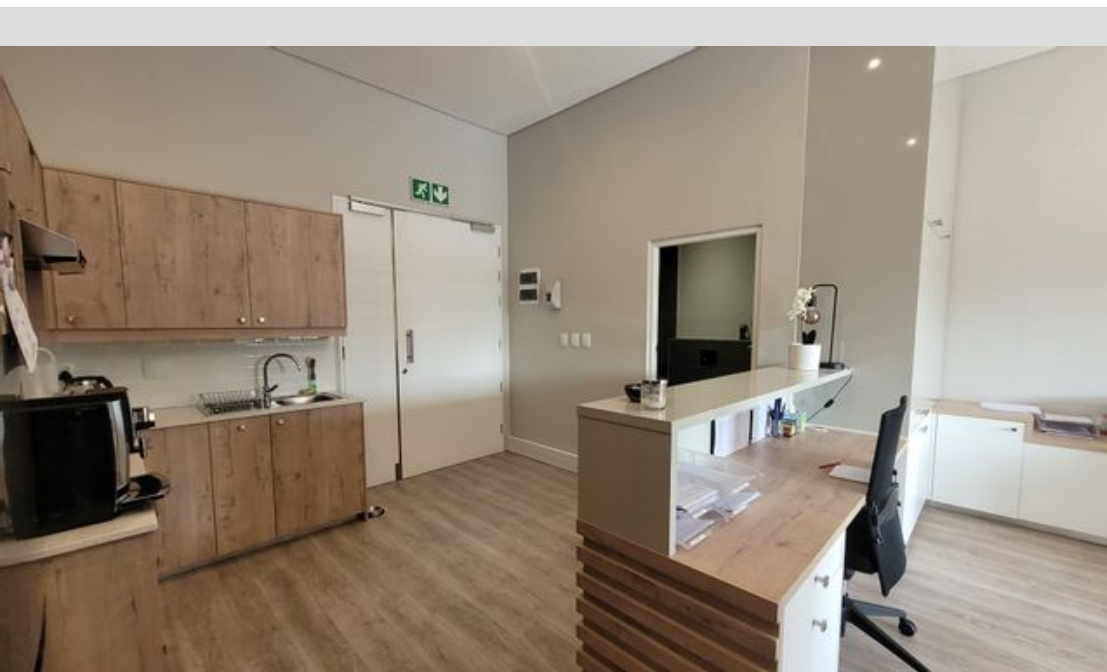
Helderberg
 Cnr Main Road & Coronation Road, Somerset West,
 7130
 (021) 2058284 | helderberg@greeff.co.za

GREEFF

CHRISTIE'S
 INTERNATIONAL REAL ESTATE

Where it counts

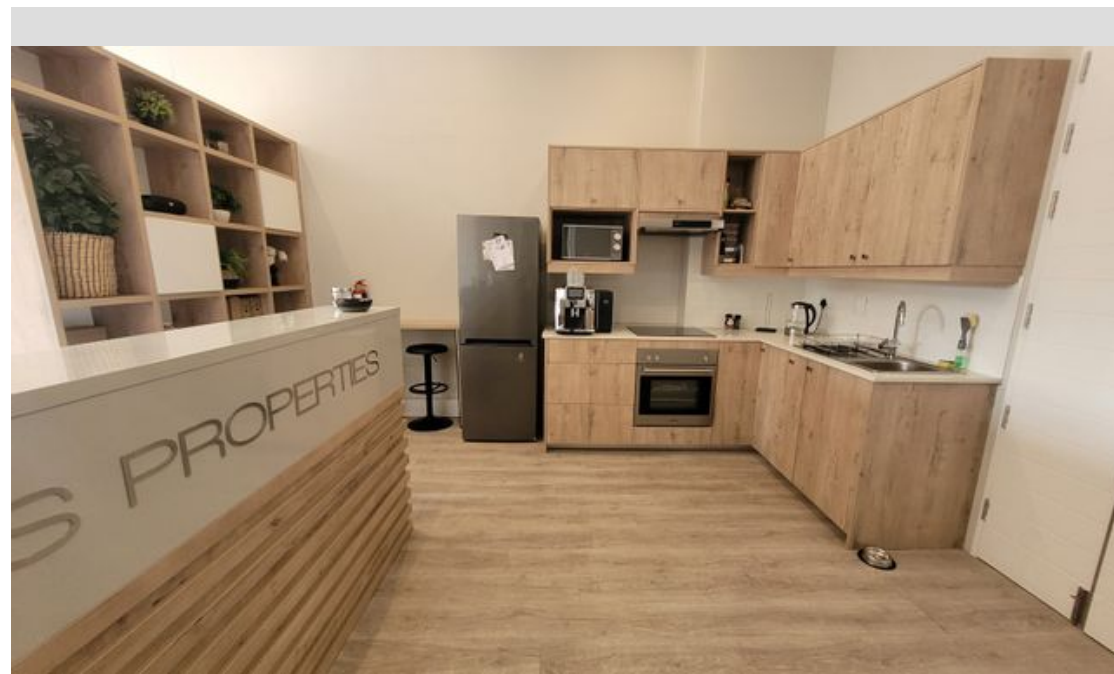
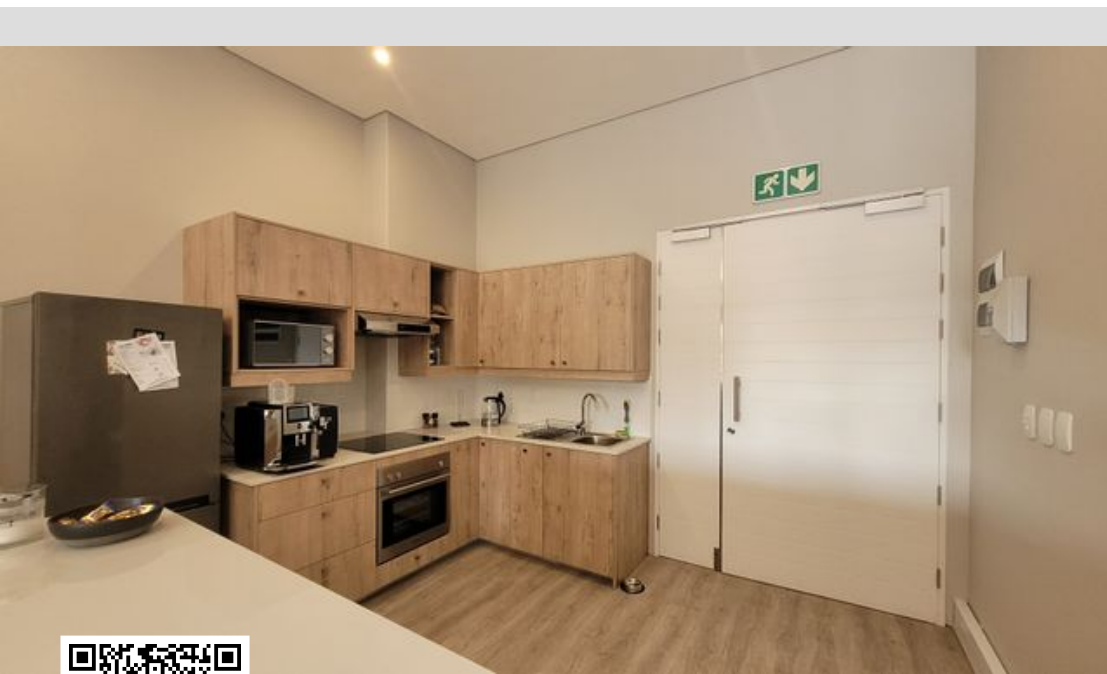
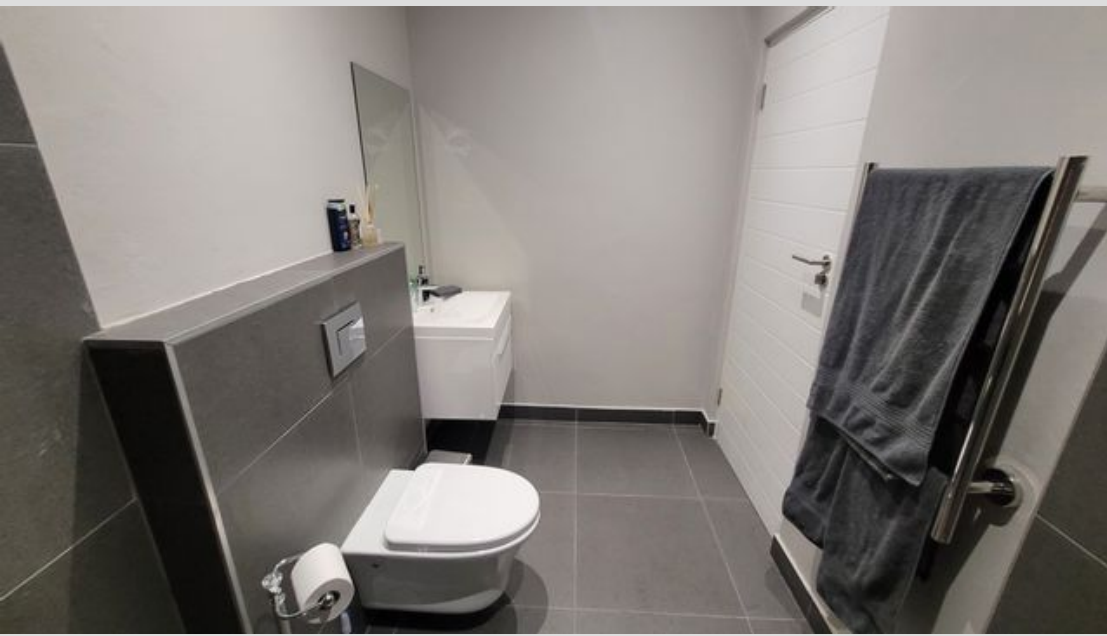
Exclusive Affiliates of Christie's International Real Estate. E & OE



● Somerset West, Paardevlei

GREEFF

CHRISTIE'S
INTERNATIONAL REAL ESTATE



Web Ref RL20815
<https://www.greeff.co.za>