



● Somerset West, **Roundhay**

GREEFF



CHRISTIE'S
INTERNATIONAL REAL ESTATE



R5,350,000



Brand new Contemporary Lifestyle Property in Boutique Estate

This newly constructed home offers premium lifestyle for the modern family. Only 4 houses in this boutique estate of double story freestanding houses. This beautiful home with a practical layout features three spacious bedrooms, two are en-suite and the third bedroom with its own bathroom. The open-plan living areas downstairs lead onto the covered patio with built in braai and garden. The kitchen is equipped with top end finishes and fittings and the spacious scullery and laundry is plumbed for all appliances. A guest cloak room and direct access double garage makes this the ideal home for the modern family. Additional features include six solar panels and a backup battery. The estate is very close to some of Somerset West's top schools. Give me a call



Web Ref RL23132
<https://www.greeff.co.za>

Features

Interior	Exterior	Sizes	
Bedrooms	3	Carparks/Parkings	4
Bathrooms	3	Pool	No
Recep. Rooms	2	Floor Size	231m ²
Dining Rooms	1	Land Size	600m ²



Andre Nel
 082 808 0500
andren@greeff.co.za

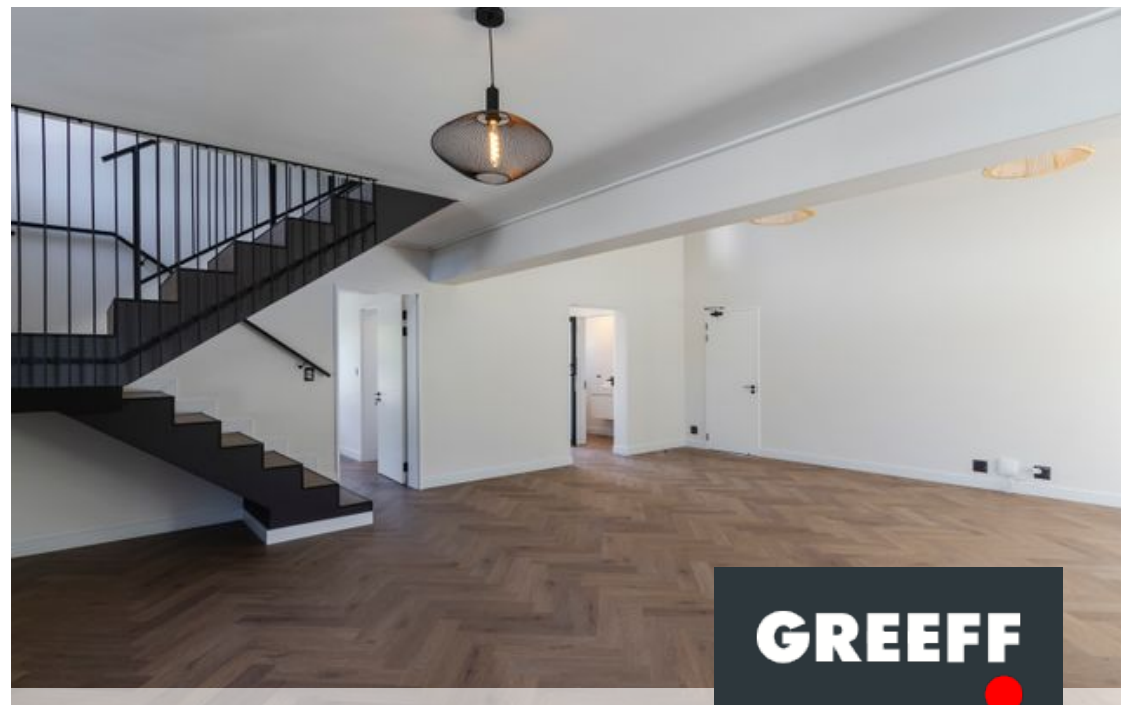
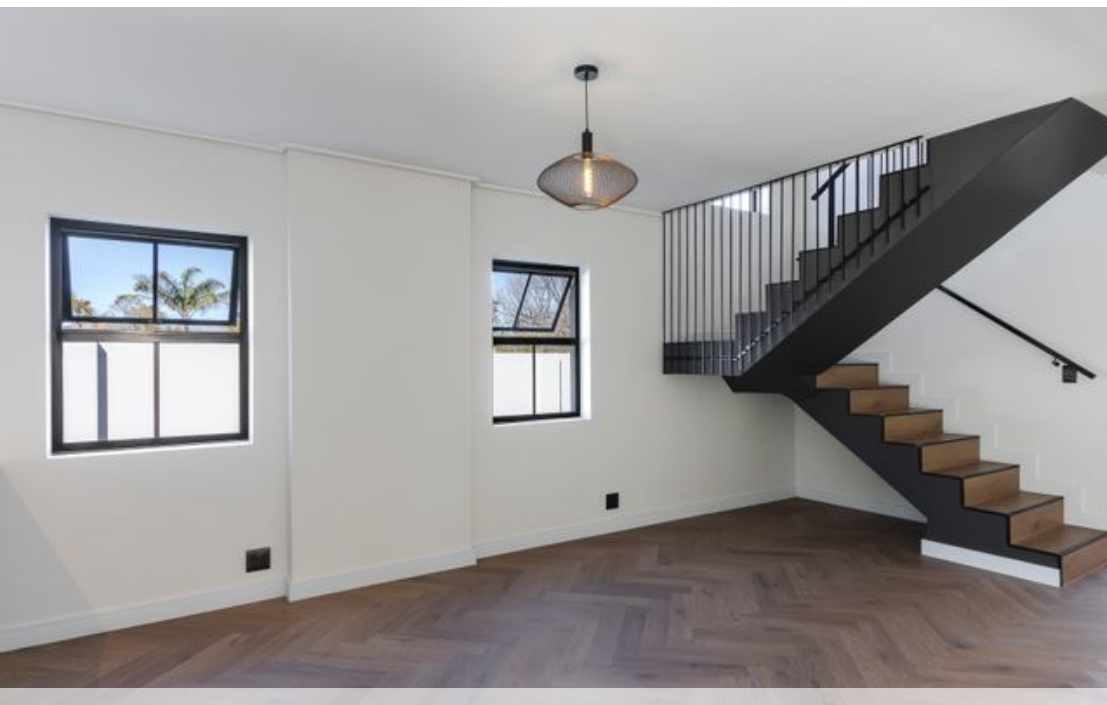
Helderberg
 Cnr Main Road & Coronation Road, Somerset West,
 7130
 (021) 2058284 | helderberg@greeff.co.za

GREEFF

CHRISTIE'S
 INTERNATIONAL REAL ESTATE

Where it counts

Exclusive Affiliates of Christie's International Real Estate. E & OE



● Somerset West, Roundhay

GREEFF



CHRISTIE'S
INTERNATIONAL REAL ESTATE



Web Ref RL23132
<https://www.greeff.co.za>