



● Wellington, Ranzadale

GREEFF



CHRISTIE'S
INTERNATIONAL REAL ESTATE



R2,680,000

 3
  1.5
  3

3 Bedroom Family Home for sale.

SOLE MANDATE This 3-bedroom house, holds incredible potential in a highly desirable neighborhood! The three bedrooms are generously sized and the living and dining areas offer a spacious, open layout. The backyard is a hidden gem with plenty of space for landscaping, gardening or even expanding the outdoor living area. There's so much room to add a garage, carport, deck, or even a small pool to make the space your own. Whether you're looking to renovate and make it your dream home or seeking a property with investment opportunities, this house is full of promise A standout feature of this property is the flatlet, a self-contained unit located separately from the main house. The flatlet is a cozy one-bedroom space, ideal for renting out for extra income or for use...



Web Ref RL24055
<https://www.greeff.co.za>

Features

Interior		Exterior		Sizes	
Bedrooms	3	Carports/Parkings	3	Floor Size	205m ²
Bathrooms	1.5	Pool	No	Land Size	598m ²
Recep. Rooms	2				
Dining Rooms	1				



Madeleine De Jager
 0846060063
madeleine@greeff.co.za



Hanno Koen
 079 969 6396
hanno@greeff.co.za

Greeff Paarl & Winelands
 158 Main Road,, Cape Winelands District
 Municipality,, Western Cape,, South Africa
 (021) 8713040 | paarl@greeff.co.za

GREEFF

CHRISTIE'S
INTERNATIONAL REAL ESTATE

Where it counts

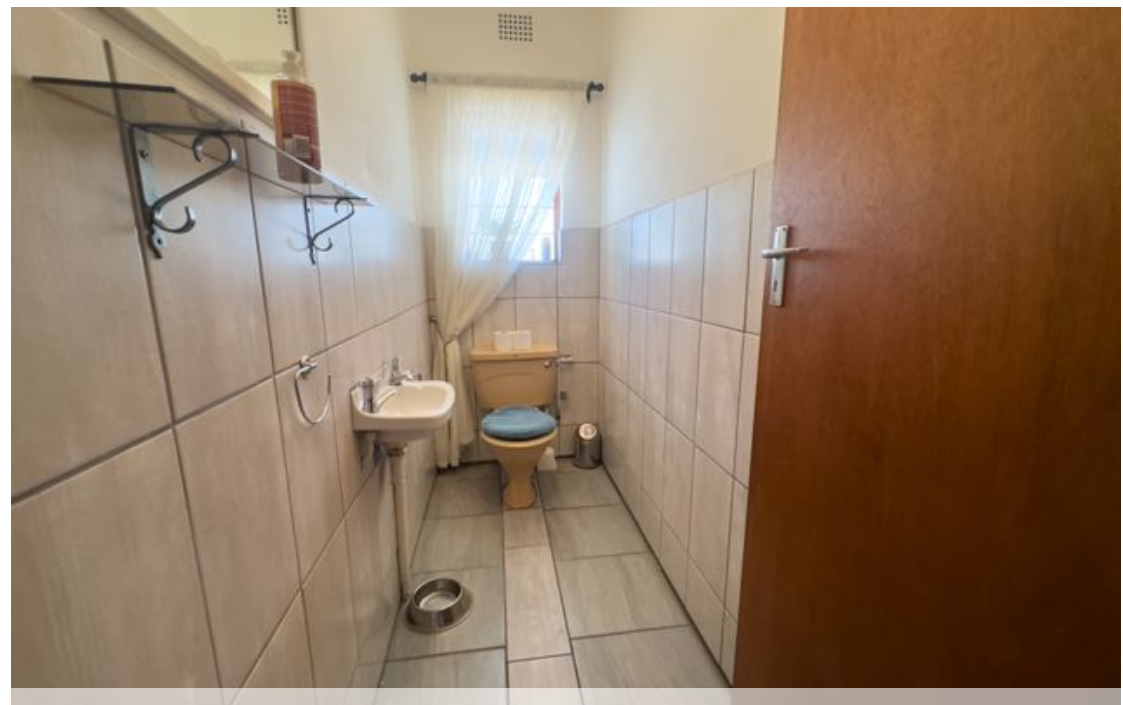
Exclusive Affiliates of Christie's International Real Estate. E & OE



● Wellington, Ranzadale

GREEFF

CHRISTIE'S
INTERNATIONAL REAL ESTATE



Web Ref RL24055
<https://www.greeff.co.za>