



● Wellington, **Wellington Central**

GREEFF

CHRISTIE'S
INTERNATIONAL REAL ESTATE



R2,650,000



Modern 3 Bedroom Home in country lifestyle Estate

Welcome to your dream home in the heart of the Cape Winelands! Nestled within a prestigious 24-hour security estate in Wellington, this charming 3-bedroom, 2-bathroom residence offers a perfect blend of comfort, luxury, and serene living. Features include: - Spacious 3 bedrooms with ample natural light - 2 modern bathrooms for convenience and style - Solar geyser for energy efficiency and eco-friendly living - A lovely balcony overlooking a picturesque landscape and tranquil dam - Covered patio with a built-in braai (barbecue) – ideal for entertaining or relaxing - Open-plan living areas for seamless flow and comfort Enjoy the beauty of the surrounding vineyards, rolling hills, and the sense of community within this secure estate. Whether you're looking to retire in...



Web Ref RL23221
<https://www.greeff.co.za>

Features

Interior	Exterior	Sizes			
Bedrooms	3	Carports/Parkings	2	Floor Size	155m ²
Bathrooms	2	Pool	No	Land Size	202m ²
Recep. Rooms	2				
Dining Rooms	1				



Hanno Koen
 079 969 6396
 hanno@greeff.co.za



Leilani Le Roux
 082 333 6443
 leilani@greeff.co.za

Greeff Paarl & Winelands
 158 Main Road,, Cape Winelands District
 Municipality,, Western Cape,, South Africa
 (021) 8713040 | paarl@greeff.co.za



Where it counts

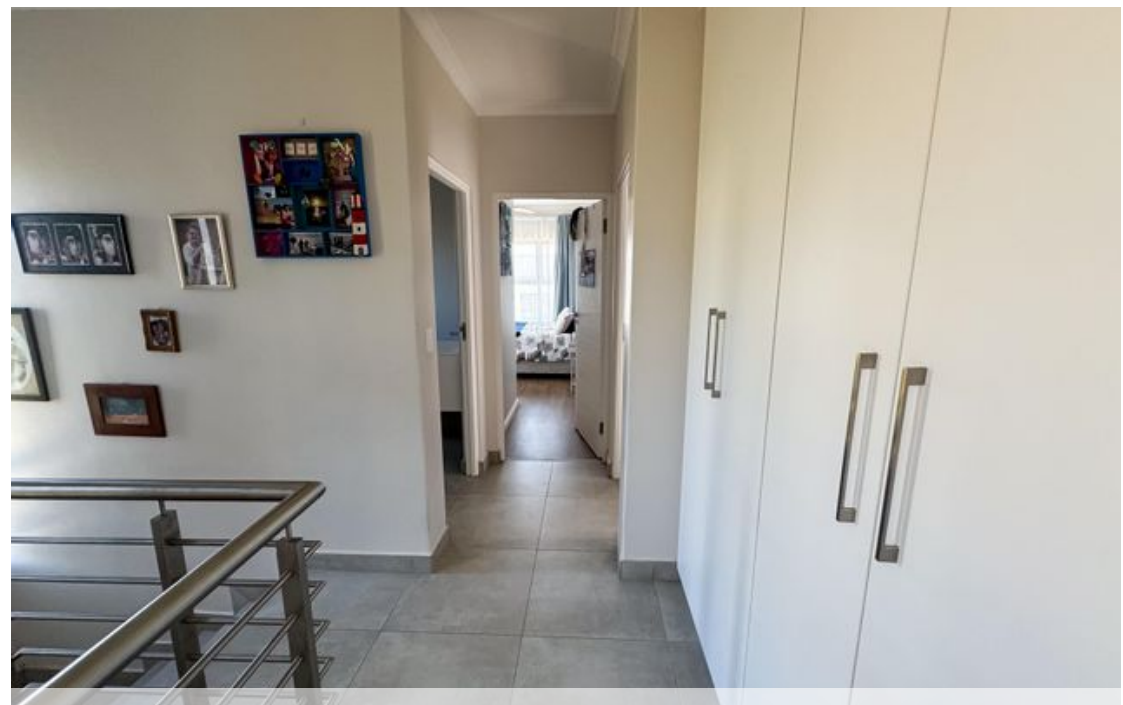
Exclusive Affiliates of Christie's International Real Estate. E & OE



● Wellington, **Wellington Central**

GREEFF

CHRISTIE'S
INTERNATIONAL REAL ESTATE



Web Ref RL23221
<https://www.greeff.co.za>