



● Kleinmond, Arabella

GREEFF



CHRISTIE'S
INTERNATIONAL REAL ESTATE



R35,000 pm



Long term rental in Arabella

Exclusive Mandate. An exceptionally well maintained property in Arabella. Introducing this immaculate and spacious 4 bedroom all en-suite property. Located in a peaceful cul-de-sac in a favourable location on the estate. Standout features to this property include: • Four spacious bedrooms, all en-suite and solid wood flooring. • A downstairs terrace opening up onto the private garden. • The spacious upstairs loft is equipped two study nooks and offers spectacular views of the 8th fairway and surrounding countryside. • A well-appointed kitchen. • A large downstairs open plan lounge area equipped with a wood burning fireplace. • A single garage with direct access to the kitchen and 3 parking spaces. This is the ideal place to live and work in harmony as you can...



Web Ref RL21546
<https://www.greeff.co.za>

Features

| Interior | Exterior | Sizes | | | |
|--------------|----------|-------------------|----|------------|-------------------|
| Bedrooms | 4 | Carports/Parkings | 4 | Floor Size | 230m ² |
| Bathrooms | 4 | Pool | No | Land Size | 600m ² |
| Recep. Rooms | 3 | | | | |
| Dining Rooms | 1 | | | | |



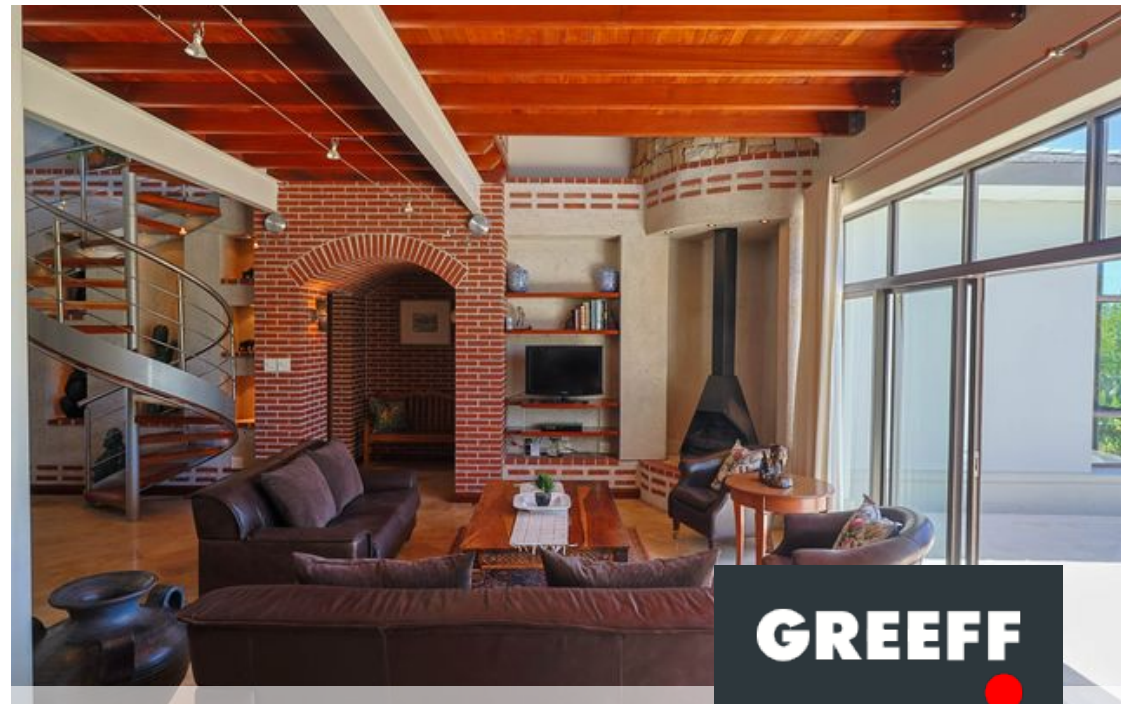
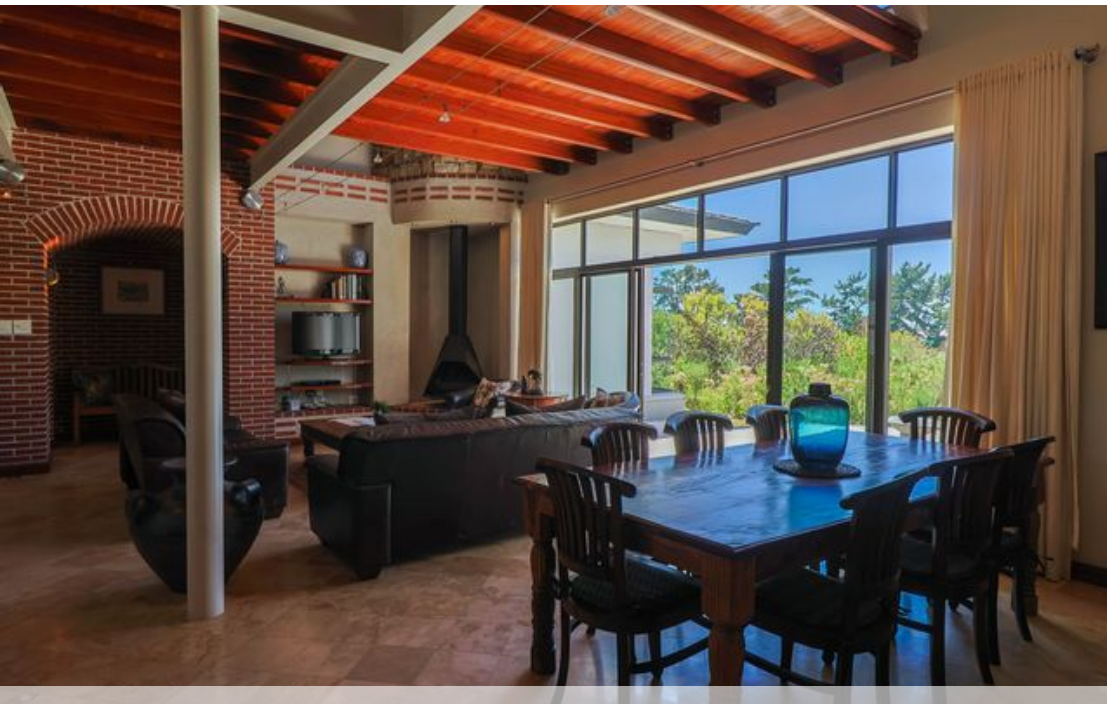
Bhavinee Siepman
 082 797 6233
 bhavinee@greeff.co.za

Helderberg
 Cnr Main Road & Coronation Road, Somerset West,
 7130
 (021) 2058284 | helderberg@greeff.co.za



Where it counts

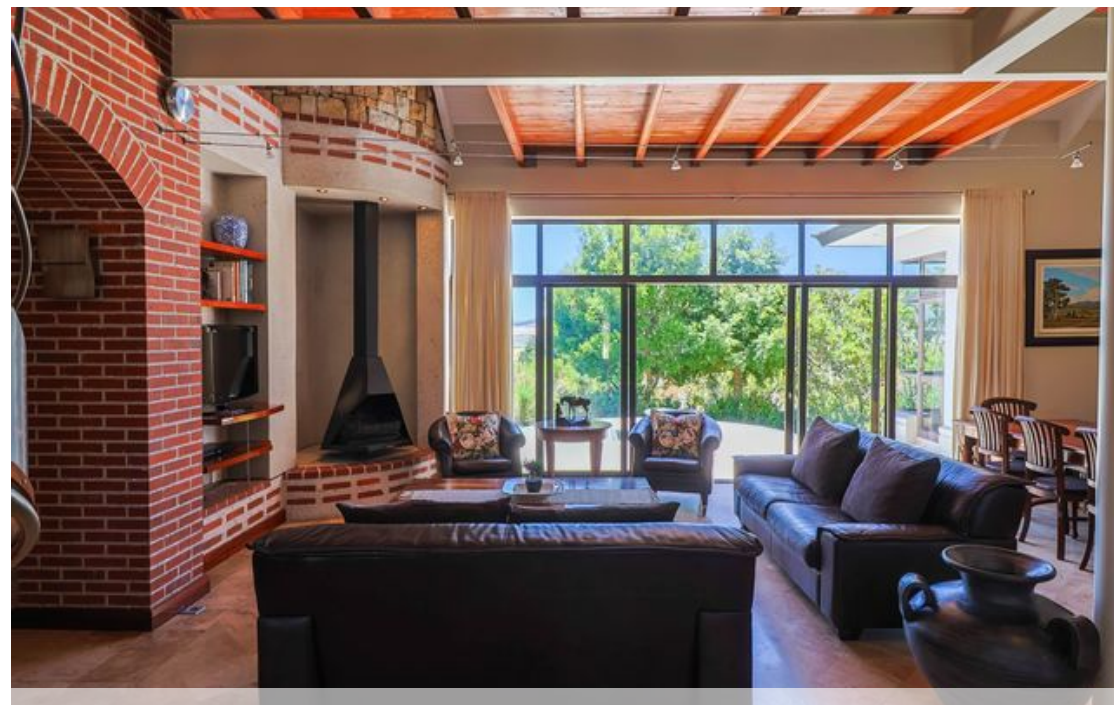
Exclusive Affiliates of Christie's International Real Estate. E & OE



● Kleinmond, Arabella

GREEFF

CHRISTIE'S
INTERNATIONAL REAL ESTATE



Web Ref RL21546
<https://www.greeff.co.za>